

*Introducing*  
IPS Empress® Esthetic



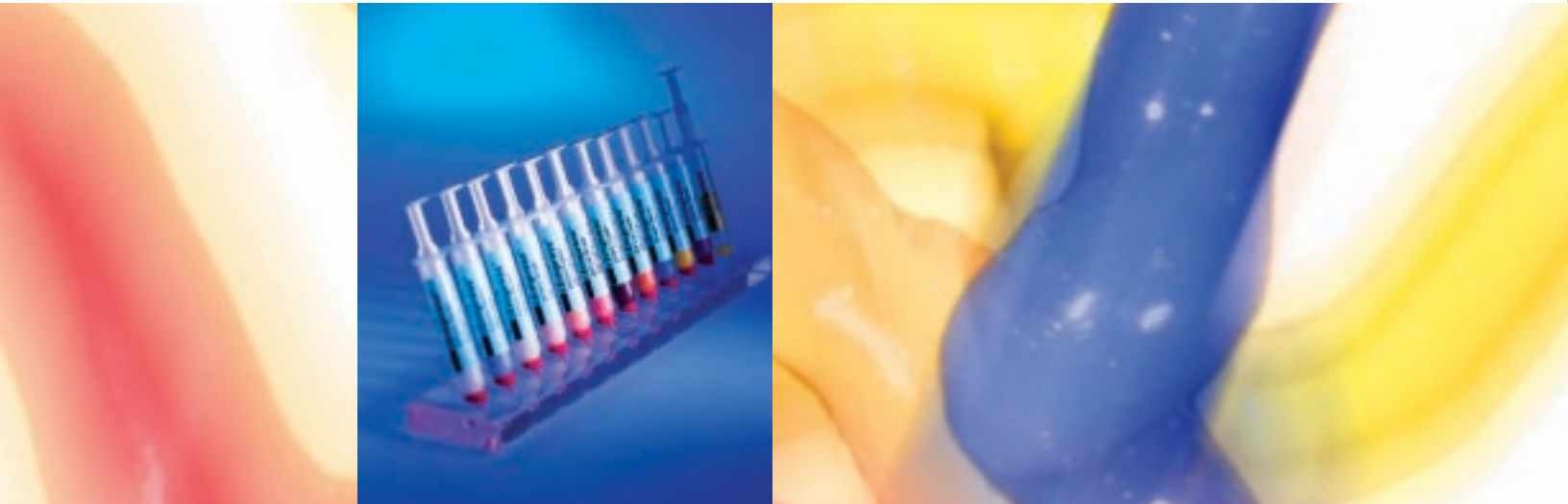
Press for Fit...  
Layer for Beauty!

IPS Empress®  
Esthetic

ivoclar  
vivadent  
technical

# IPS EMPRESS® ESTHETIC

Throughout the last 15 years, and into the future, it is our mission to refine, enhance and perfect IPS Empress, so that it remains the brand that offers the profession the ideal combination of simplicity, elegance, esthetics and function. Now, dramatic esthetic results are even easier to achieve with a new addition to the IPS Empress family - IPS Empress Esthetic.



*Technique*

**W**ith over 25 million restorations placed worldwide, IPS Empress delivers the ultimate in metal-free esthetics and trusted clinical performance. Optimizing a technique developed by Lee Culp, CDT and further refined with Lee, Matt Roberts and Jürgen Seger, CDT, this material raises the bar for pressable ceramics delivering even more life-like esthetic results and improved physical properties.



IPS Empress Esthetic offers a new leucite reinforced glass ceramic with a broader ingot shade range that gives you more selection to meet the demands of your dentist clients. The dispersion of leucite crystals in the Empress Esthetic ingot provides greater homogeneity resulting in enhanced ingot density and improved flexural strength. Used with a traditional staining technique or a cut-back technique, the new Empress Esthetic ingot delivers outstanding esthetics.



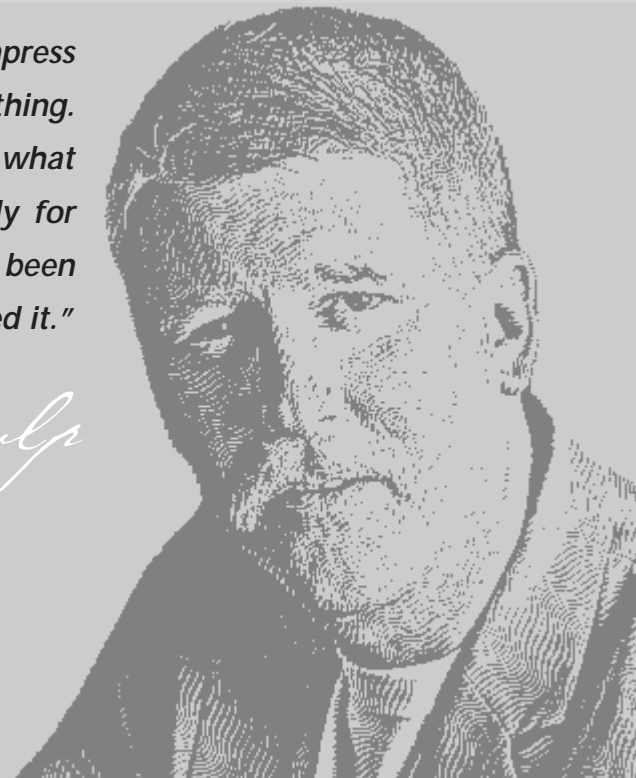
When coupled with the new line of IPS Empress Esthetic Veneering Materials and IPS Empress Esthetic Wash Pastes, Empress Esthetic offers ceramists the added flexibility of using a cutback technique to fabricate life-like restorations. Created in partnership with leading ceramists, this system has been designed to offer a simple technique for creating outstanding esthetics. Offering a complete pallet of veneering materials and wash pastes, this system gives you the tools of the masters so that each of your restorations can be a masterpiece.



*"What we did with IPS Empress Esthetic was optimize everything. We took what we've had and what we've been using successfully for the last 15 years - which has been the benchmark - and perfected it."*

LEE CULP, CDT.

*Lee Culp*



*culp*  
S<sup>®</sup> ESTHETIC

# Technique

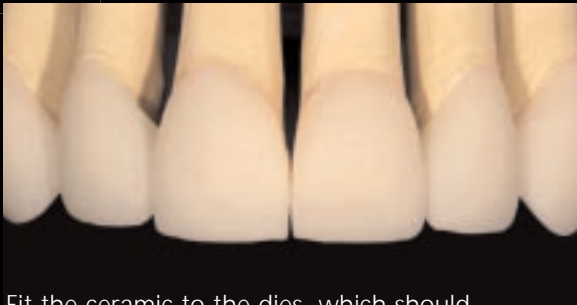
IPS EMPRESS® ESTHETIC

1



Design the wax-up to optimal function and esthetics. Sprue the wax-ups, invest them and burn them out in the burn-out oven. Press the IPS Empress Esthetic ingot into the mold. After divesting, you will have an exact duplicate in ceramic of the form you had in wax.

2



Fit the ceramic to the dies, which should require minimal effort. Adjust the contacts between the restorations. Remove the sprues and verify occlusion. At this point, all of the function has been completed within the restoration - all contacts have been verified, and theoretically - the restoration could go into the mouth now but it would be just one color.

3



Examine the restorations from an esthetic, color and creative aspect. Reduce the incisal edge for layering. With IPS Empress Esthetic only the incisal portion of the tooth needs to be layered. The incisal edge of the tooth is reduced to maintain a minimal thickness of 0.5 mm. The facial aspect is reduced and the shape of the final tooth form is maintained.

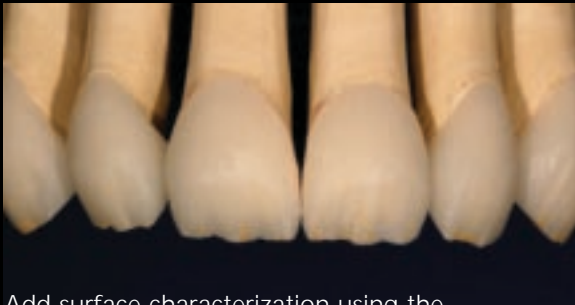






The complete pallet of IPS Empress Veneer Materials and IPS Empress Wash Pastes puts the tools of the masters in your hands.

4



Add surface characterization using the IPS Empress Esthetic Veneer Wash Pastes to build up internal effects.

5



To obtain a three dimensional effect, layer over this using different values and translucencies of clear and opal enamel IPS Empress Esthetic Veneer Materials. Once all the porcelain is layered, fire the restorations in an oven. Recontour the incisal half of the restoration to match the gingival half. Verify occlusion, apply surface characterizations around the gingival margin and then glaze the restoration.



*Restorations and Photography  
Courtesy of Lee Culp, CDT.*

LEE CULP, CDT

*Lee Culp*



"IPS Empress Esthetic materials provide a systematic way to achieve phenomenal esthetics in an extremely simple technique. It's not complicated, and it's not time consuming. It's elegant simplicity."



Before



Dentistry by Dr. Michael Sesemann

Matt Roberts

*Matt Roberts*



"IPS Empress delivers excellence once again. The new IPS Empress Esthetic materials give me the tools I need to achieve the esthetic goals our patients demand."



Before



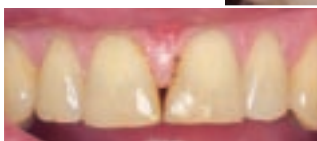
Dentistry by Dr. John Roberts

Jürgen Seger, CDT

*Jürgen Seger*



"IPS Empress Esthetic allows high quality ceramic veneers to be fabricated using an effective and efficient technique. Their optical appearance completely convinces patients and experts alike."

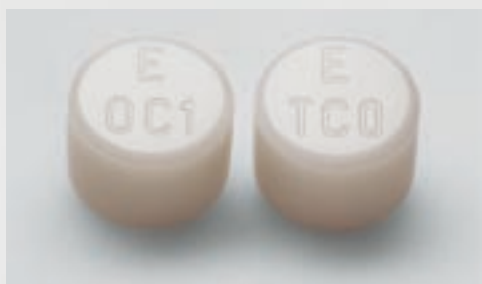


Before



Dentistry by Dr. Michael Miyasaki

*Introducing*  
IPS Empress® Esthetic



*Featuring Two  
New Ingot Shades*

# IPS EMPRESS® ESTHETIC



## 579382EN IPS Empress Esthetic Veneer Kit

- 1 IPS Empress Esthetic Ingot ETC0 Vial of 5
- 1 IPS Empress Esthetic Ingot EOC1 Vial of 5
- 11 IPS Empress Esthetic Wash Pastes
- 3 IPS Empress Esthetic Veneer Materials – Incisal Opal Shades
- 2 IPS Empress Esthetic Veneer Materials – Incisal Chroma Modifier Shades
- 6 IPS Empress Esthetic Veneer Materials – Incisal Shades
- 1 IPS Empress Esthetic Veneer Materials – Brightener
- 2 IPS Empress Esthetic Veneer Materials – Transparent
- IPS Empress Esthetic Ingot Shade Guide
- IPS Empress Esthetic Veneer Material Shade Guide
- 1 IPS Empress Add-On 770°C/1418°F
- 1 IPS Empress Universal Glaze
- 1 IPS Empress Universal Glaze/Staining Liquid
- 1 IPS Empress Universal Glaze

## 574523BN IPS Empress Esthetic Ingot Kit

- 11 IPS Empress Esthetic Ingot Vials of 5 in the following shades:  
ET1, ET2, EO1, EO2, ETC1, ETC2, ETC3, ETC4, ETC5, ETC0, EOC1
- IPS Empress Esthetic Ingot Shade Guide

USA  
175 Pineview Drive  
Amherst, NY 14228  
716.691.0010  
1.800.533.6825  
716.691.2285 Fax  
www.ivoclarvivadent.us.com  
mail@ivoclarvivadent.us.com

CANADA  
2785 Skymark Ave. Unit 1  
Mississauga, Ontario L4W 4Y3  
905.238.5700  
1.800.263.8182 (Inside Canada)  
905.238.5711 Fax  
www.ivoclarvivadent.ca  
mail@ivoclarvivadent.us.com

IPS Empress®  
Esthetic

ivoclar  
vivadent  
technical